

# SCALAR WAVES ON BOSNIAN PYRAMIDS!

## Magnetotelluric and electrodynamics research, September 2016 mission: "Archaeological Park: Bosnian Pyramid of the Sun", Visoko, Bosnia-Herzegovina (Partial, the most interesting findings<sup>1</sup>)

### Measuring Equipment:

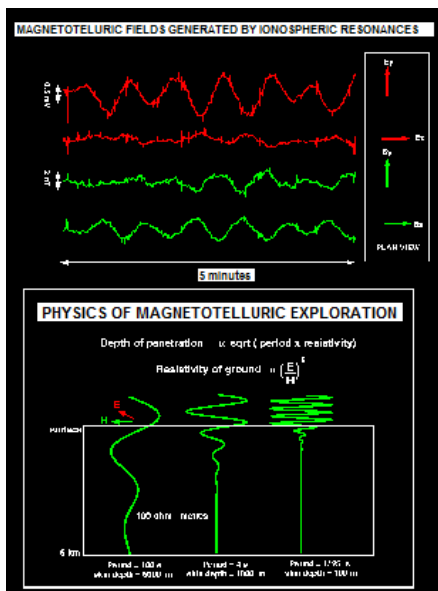
1. Teslameter TM 40 [ $H_{50Hz}$ , nT]
2. Trifield meter, 100XE [ $H$ , mG;  $E$ , V/m]
3. Digitalni multimeter Mastech MS8229 [ $T$ , °C;  $Hum$ , %;  $Noi$ , dBrel]
4. VF-Broadband amplifier, special /light weight/, OBD LAB, Beograd, "E"- sensor: rod antenna,  $l = 30$  cm; "H"- sensor: open coil antenna; "M"-sound sensor: "Knowles" Piezo Ceramic ST Microphone (BL series)
5. PC osciloscop OWON, VDS1022
6. Tablet computer, I.Onik, Quad Core, Win 8.1
7. S-meter, Bedini version of Dea/Faretto detector, IB Mraz, [ $S_c$ , Ampl., % deflection]
8. Experimental life energy meter, Heliognosis model LM3, [ $O_r$ , Range, Fine, Coarse, % deflection]

**Note 1:** EM spectra varies slightly, the signals are changeable in amplitude and frequency. The signals originating from measuring devices and equipment used during the measurements (including drone aircraft ) were registered before measuring on the Measuring Points. Vrms value registered by equipment [5, 6] should be considered as relative one to each other due to using equipment [4] during the measurements. If needed, registered values can be recalculated and expressed as an absolute.

### Measurement Method: MT + 3D structure of the spatial energy fields measurement

Magneto telluric (MT) and Audio Magneto telluric (AMT) method [1] combined with measurements in air - using the drone aircraft [2] and special equipment [M.Eq. 4,5,6] specially configured for this type of research because of limitations in weight (max. 800 g) and large requirement in terms of the measuring equipment sensitivity, the width of the measuring range, the purpose of recording and registering Vrms signals during the drone flight due to the necessity for the subsequent analysis of signals amplitude and frequency spectra (FFT). All these requirements were fulfilled by choice of the suitable hardware and software so the total weight of equipment was only 788 grams, which is below the allowed limit of 800 grams for the drone aircraft model used.

Although a very complex, the chosen method enabled us to obtain a 3-D structure of energy fields intensity at the selected locations, in the vertical plane to a height of about 50 meters and in the horizontal plane to a diameter of about 150 meters!



<sup>1</sup> Complete measurements data are stored in the Eng. Goran Marjanovic's database.

Magneto Telluric (MT) and Audio Magneto Telluric (AMT) methods [1] are electromagnetic methods that measure variations in the earth's surface electromagnetic fields at different frequencies. They sample the electric and magnetic fields in the low (IF-Audio-UF) frequency range. Sources of the MT/AMT signals may be either artificial or natural.

Solar energy and lightning cause natural variations in the earth's magnetic field, inducing electric currents (known as telluric currents) under the Earth's surface. Earth currents arise from both natural and man-made sources, including magma and the normal distribution and use of electricity. Combined, these phenomena create strong magneto telluric source signals over the ULF/LF frequency spectrum.

Magnetic fields in the frequency range of 1 Hz to approximately 20 kHz are part of the audio-magneto telluric (AMT) range. These fields are parallel to the Earth surface and move towards the Earth's centre. This large frequency band allows for a range of depth penetration from several meters to several kilometers below the Earth's surface. Due to the nature of magneto telluric source, the waves generally fluctuate in amplitude height. Long recording times are needed to ascertain usable readings due to these fluctuations and, also, due to low signal strength.

Multidirectional MT sounding, performed on different locations can clearly indicate a different ratio of the electric to magnetic field and their phase-shifting caused by the different speeds of propagation, pointing in that way to different subsurface areas' mechanical, magnetic and electric conductivity, i.e. its anisotropy and in fact its structure.

"E" field measurements in free space provides us insight into the volumetric (3D) structure of the energetic fields, which is of particular interest in the case of locations where some "energy phenomena" were detected on the ground.

### **Measuring Values:**

The research includes the recording of electromagnetic and mechanical energy spectra, performed using the magnetotelluric method in the frequency range from extremely low to medium frequencies (25 mHz – 50 kHz) for electric and/or magnetic phenomena.

Measuring of mechanical vibrations was performed in the infrasound, audio and ultrasound range. For these measurements we used the conventional devices numbered as 1. to 6. in the list of measuring equipment.

During measurements in the air, because of the drone motors noise (EM smog) recordings was done only in the "E" domain.

In addition to these measurements the detection of the presence of scalar fields was performed by "S-meter" (6). Investigations of unconventional energy fields, as "Orgone energy" e.g., was carried out by special alternate energy device (Eq. 7.) that is intended for scientific research into life processes.

Furthermore, at each measuring point control parameters measured: a) presence and intensity of "EM smog" caused by power network (50 Hz); the strength of the dynamic magnetic (b), dynamic electric (c) fields and radio waves strength (d); temperature (e), humidity (f) and noise (g).

Complete measurement recordings are stored in my database but in this paper we introduce only the most interesting findings just to illustrate our conclusions.

### **Measurements:**

**Location 1:** "Bosnian Pyramid of the Sun", 09.09.2016, 11.40 h.

### **Measured Values:**

$H_{50\text{Hz}} = 7 \text{ nT}$ ,  $H = 0.6 \text{ mG}$ ,  $E = 25 \text{ V/m}$ ,  $T = 25 \text{ }^\circ\text{C}$ ,  $\text{Hum} = 24 \%$ ,  $\text{Noi} = -20 \text{ dBrel}$ ,  $S_c = 10,1$ ;  $O_r = 100,3,4, 86$

Note 2: On the first flight, the drone aircraft software did not register any data and PC oscilloscope software

registered only 5 recordings from the set of 36 that were programmed. On the second flight, a drone's "log file" was created, but information about the date and time were wrong. The oscilloscope software registered (capture file) only 10 measurements. On the third flight, the drone's date and time were wrong also, and PC software recorded only 12 measurements. This was the reason for abandoning further flights at this location.

We do not know the cause of this technical problems but can assume that they are due to the presence of subtle energy forms and of the specifics ambient field indicated by the relatively high level of orgone energy (Or = 86) measured (Eq.8, LM 3) at this location.

### Characteristic Spectra:

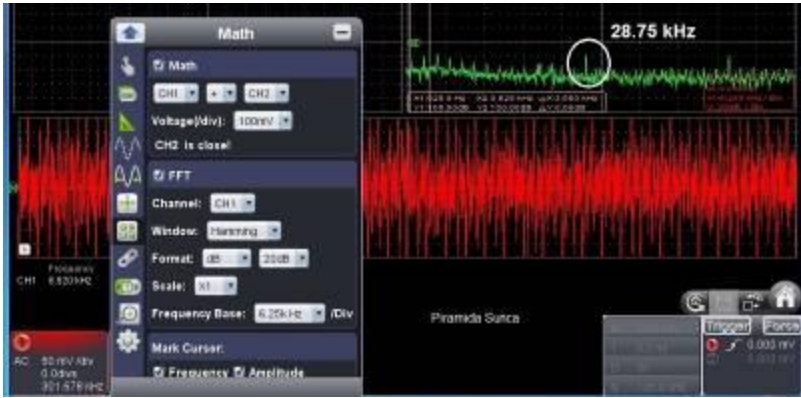


Fig.1, M. T. signal registered on the ground - in the center of the energy beam.

Fig. 2, "E" signal registered at 43.3 m above the Pyramid of the Sun.

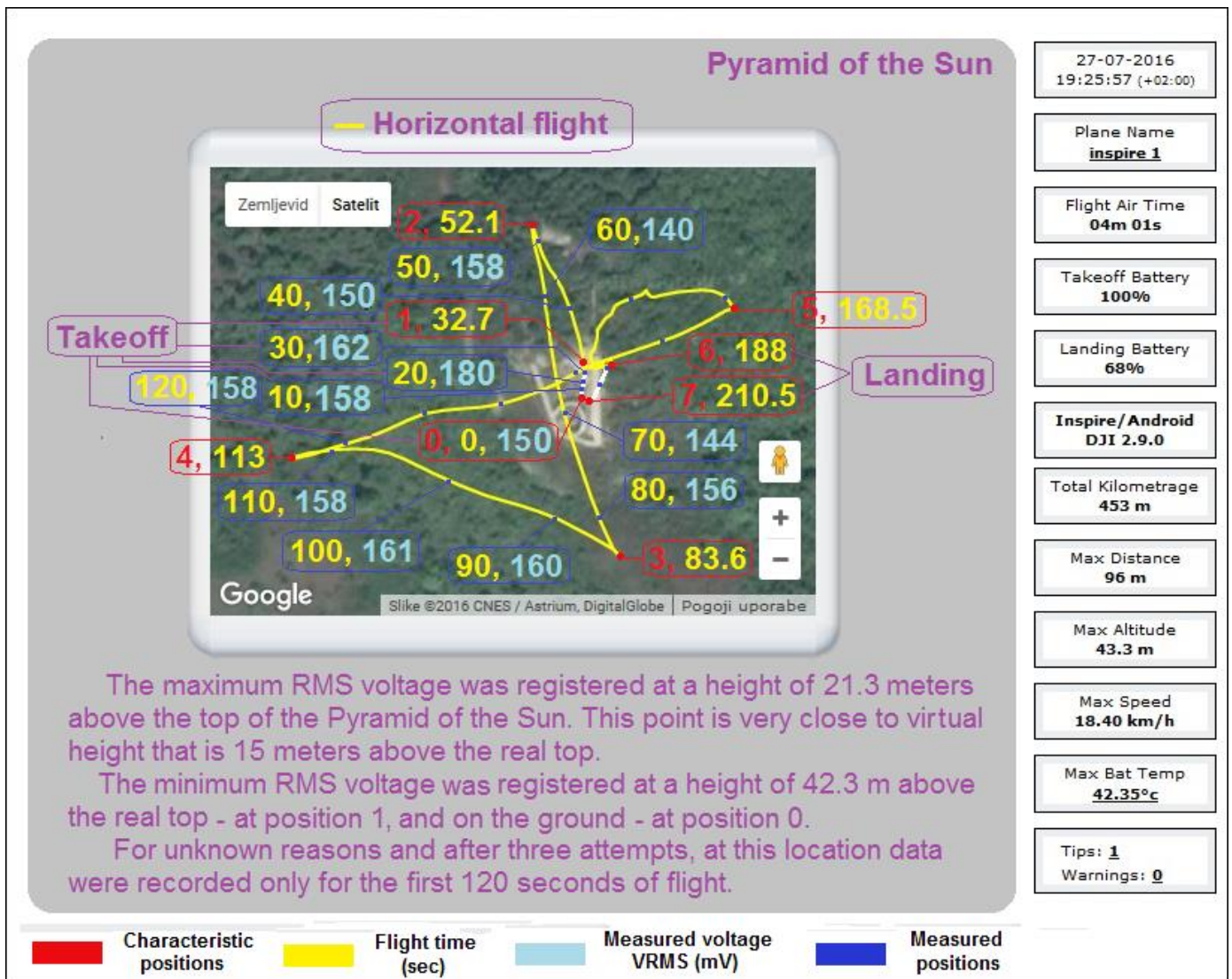


Fig.3. - 3D structure of the energy field above the Pyramid of the Sun.



## Measurement Analysis of Ambient Fields at Location 1, "Bosnian Pyramid of the Sun":

- Experimental life energy measurement at this location (Eq.8, LM 3) show a high orgon energy level ( $Or = 86$ ) which is more than 43 % ( $=86/60$ ) higher than the average level.

The "E" field signal registered on the ground at the top of the Pyramid of the Sun, is shown in Figure 1 and is comparable to the recordings registered during previous research [3] at this location.

Figure 2 shows an "E" field recording on horizontal flight level registered at a height of 43.3 m in a ninety second of flight. Vrms value (Root Mean Square / "quadratic mean") on this position (see Figure 3, Figure 4 and Appendix 1) is 156 mV, a value very close to the value of 150 mV measured at the ground in position 0, and the time of flight = 0 seconds. It is very interesting that the value of "E" fields grew with height during take-off (positions 0-1) and then decreased to a value close to amount measured at position 0. A more detailed view of the registered values changes during vertical flight is shown in Figure 4, given below, where it can be clearly seen that the registered "E" field intensity is largest in the 20<sup>th</sup> second of flight during takeoff, when the drone attained a height of about 21.3 meters. Also, analysis of the registered Vrms value during the horizontal flight at a height of about 40 m, shows slightly increased values in the south-southwest zone, suggesting that "energy beam" is not vertical but is slightly inclined in the direction of the south-southwest.

By synthesis of registered values and analysis of the "E" fields intensity distribution in the vertical and horizontal planes, we can conclude that the energy field above the Pyramid of the Sun has the shape of an elongated, irregular, ellipsoid, with the highest energy density at a height close to the virtual height of the pyramid, a little inclined in the direction of south-southwest.

More details about flight trajectory and registered values (GPS coordinates, altitude, speed, M.T. distance, time of flight, Vrms in specific positions, comments) for this location are given in Appendix 1.

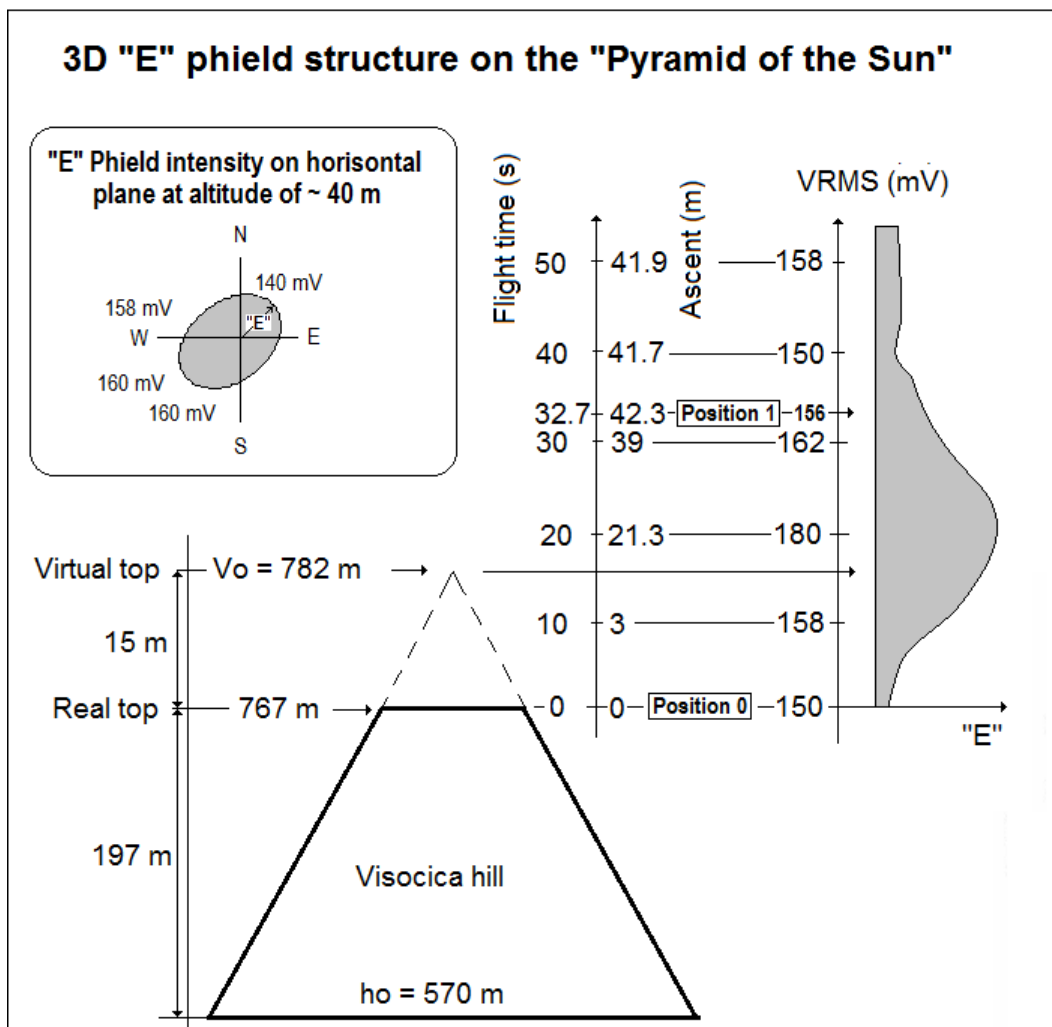


Figure 4, 3D structure of "E" field on the Pyramid of the Sun.

**Location 2:** "Tumulus in Vratnica", 09.09.2016, 15.55 h.

**Measured Values:**

$H_{50Hz} = 8 \text{ nT}$ ,  $H = 0.6 \text{ mG}$ ,  $E = 25 \text{ V/m}$ ,  $T = 26.5 \text{ }^\circ\text{C}$ ,  $\text{Hum} = 10 \%$ ,  $\text{Noi} = -30 \text{ dBrel}$ ,  $S_c = 10,1$ ;  $O_r = 100,3,1, 85$

**Characteristic Spectra:**

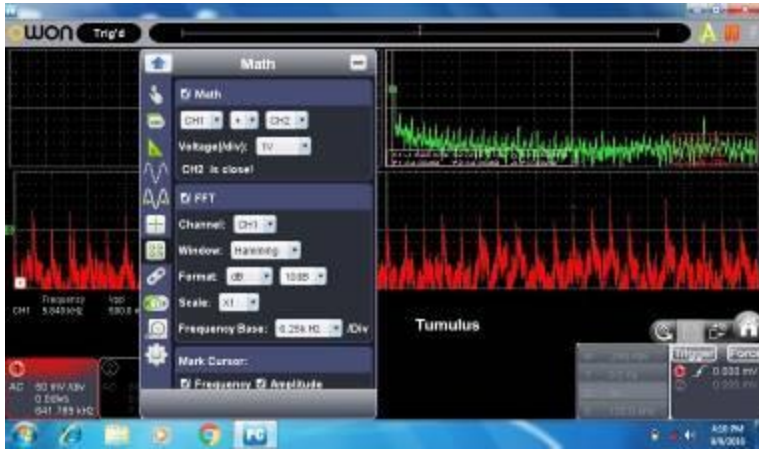


Fig.5, M.T. signal registered at the top of the Tumulus



Fig.6, "E" signal registered 43 m above Tumulus.

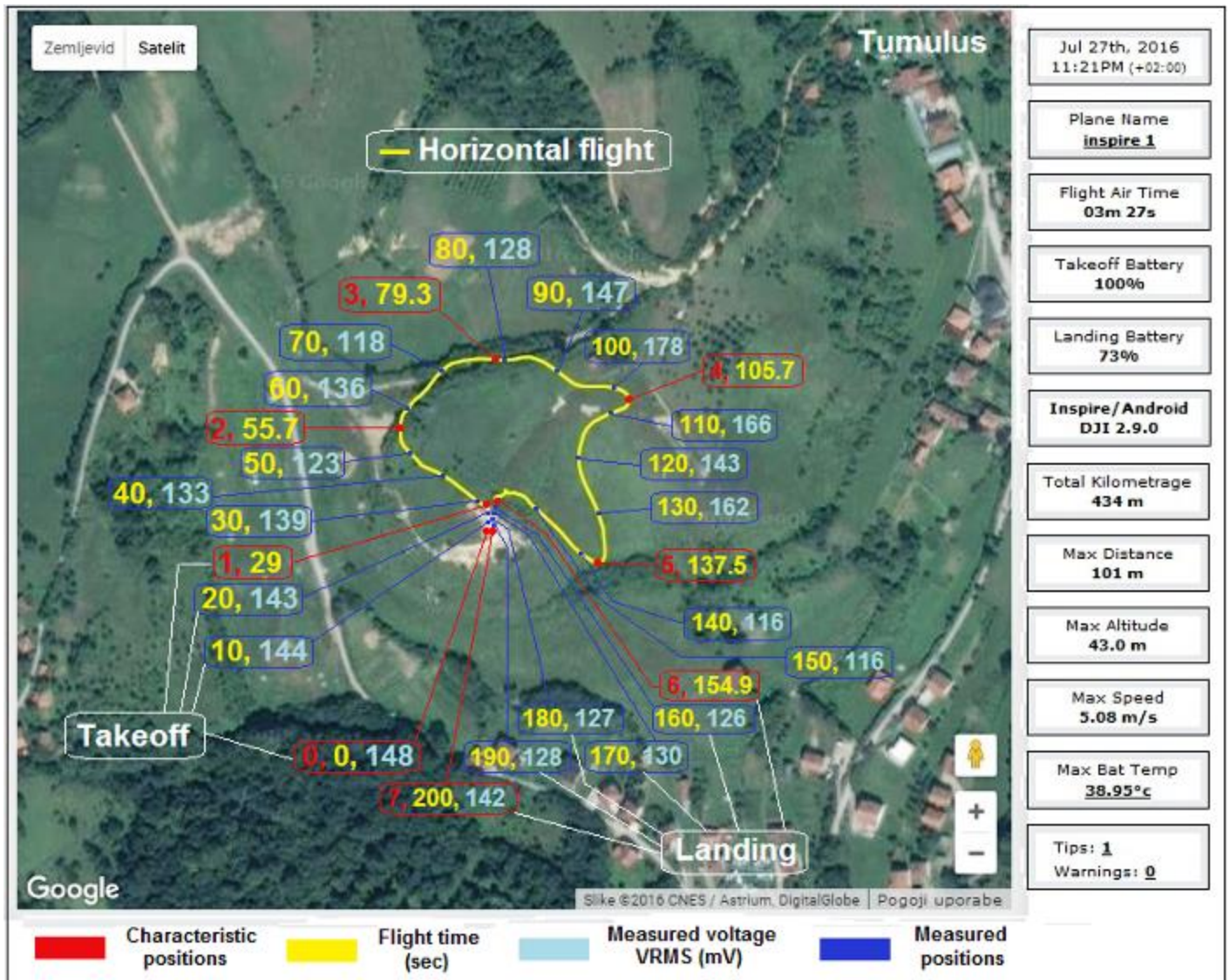


Fig.7, 3D structure of the energy field above the Tumulus

## Measurement Analysis of Ambient Fields at Location 2, "Tumulus in Vratnica":

- Measured value of "EM smog" - caused by power network 50 Hz (Eq.1)  $H_{50\text{Hz}} = 8 \text{ nT}$  is slightly higher than the usual (4-6 nT) but is of negligible value. The source is probably an aerial power line located at distance of several dozen meters from M.T.

- Experimental life energy measurement at this location (Eq.7, LM 3) show a quite high orgon energy level ( $O_r = 100$ ) which is more than 67 % ( $=100/60$ ) higher than the average level.

In Figure 5, which shows the signal recorded at the top of the Tumulus (on the ground) somewhat more pronounced frequency signals of 22 and 25.6 and 28.7 kHz, can be observed. This is consistent with previous measurements [3] at this location. Figure 6 shows the „E” fields signals recorded in horizontal flight registered at an altitude of 43 m in the 40th second of flight.  $V_{\text{rms}}$  value at this position (see fig 7, Fig. 8 and Appendix 2) is 133 mV, which is close to the mean value for the entire flight, including takeoff and landing ..

Otherwise, in contrast to the values registered at the location 1, here there are no major changes in the registered  $V_{\text{rms}}$  values. They vary slightly during takeoff as well as landing and during of horizontal flight. Yet some major changes can be seen in the north-eastern and eastern trajectory areas. A more detailed view of the „E” field changes registered during the vertical flight is shown in Figure 8 below, where it can be seen that the „E” field intensity in horizontal flight at a height of about 43 m is slightly lower in the north-eastern part and is minimal in the eastern part of the trajectory. Taking into account the real configuration of the terrain, it is obvious that the "E" field structure recorded in the horizontal flight phase follows the shape of the terrain.  $V_{\text{rms}}$  value recorded at this location during the vertical flight phases (takeoff, landing) do not show any anomalies recorded at Location 1, "Bosnian Pyramid of the Sun".

More details about flight trajectory and registered values (GPS coordinates, altitude, speed, M.T. distance, time of flight,  $V_{\text{rms}}$  in specific positions, comments) for this location are given in Appendix 2.

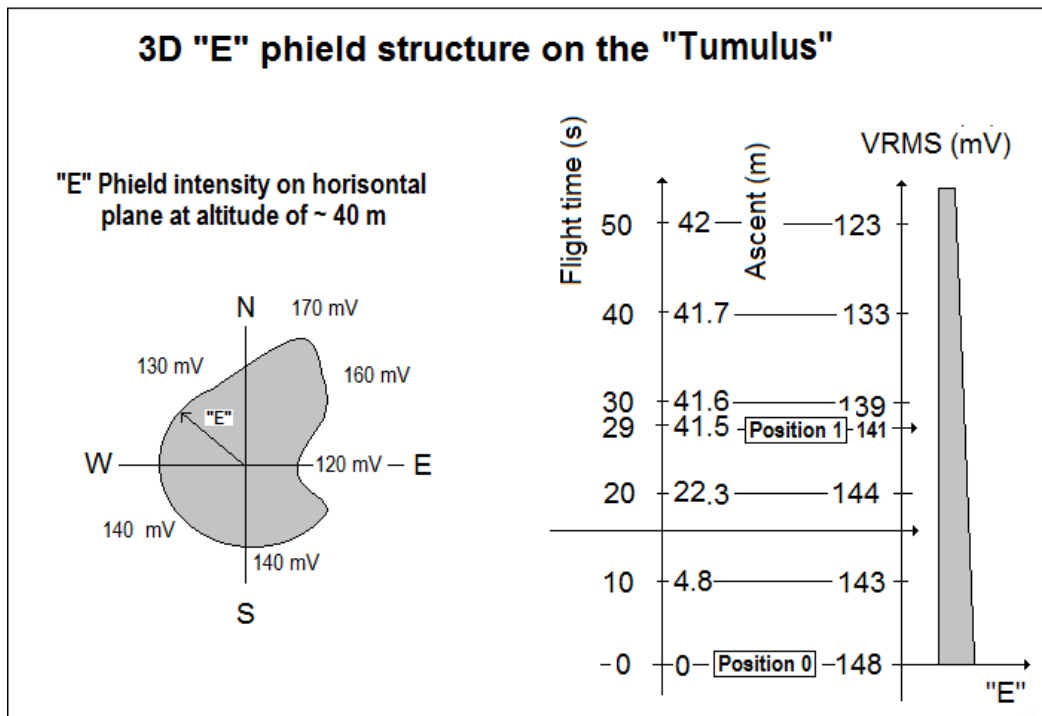


Fig.8, 3D structure of "E" field on the Tumulus.

**Location 3:** "Bosnian Pyramid of the Moon", 10.09.2016, 12.05 h.

### Measured Values:

$H_{50\text{Hz}} = 5 \text{ nT}$ ,  $H = 0.7 \text{ mG}$ ,  $E = 18 \text{ V/m}$ ,  $T = 28 \text{ }^\circ\text{C}$ ,  $\text{Hum} = 10 \%$ ,  $\text{Noi} = -16 \text{ dBrel}$ ,  $S_c = 10,1$ ;  $O_r = 100,3,3$ , 65



## Characteristic Spectra:

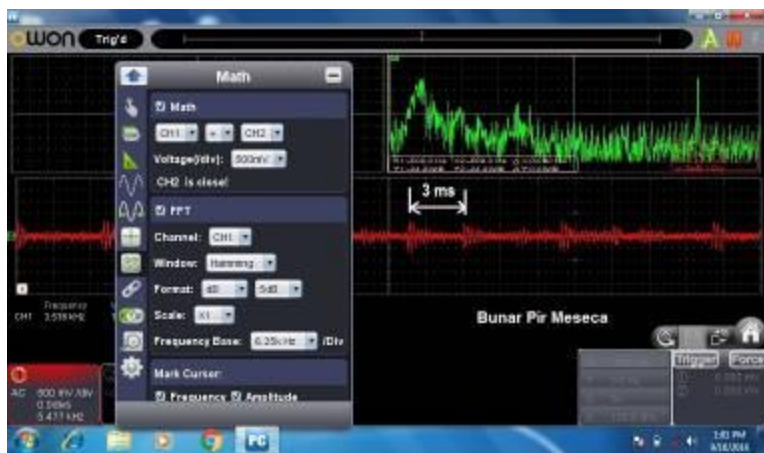


Fig.9, M.T. signal registered in the hole at the top of the "Pyramid of the Moon."

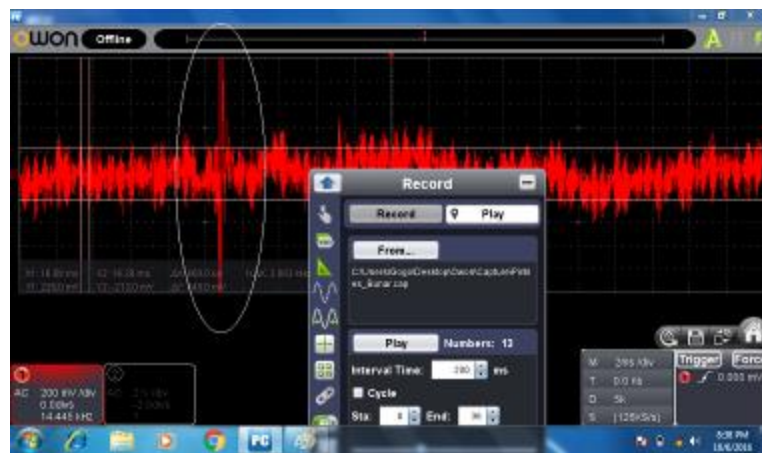


Fig.10 "signal registered 43 m above the Pyramid of the Moon"

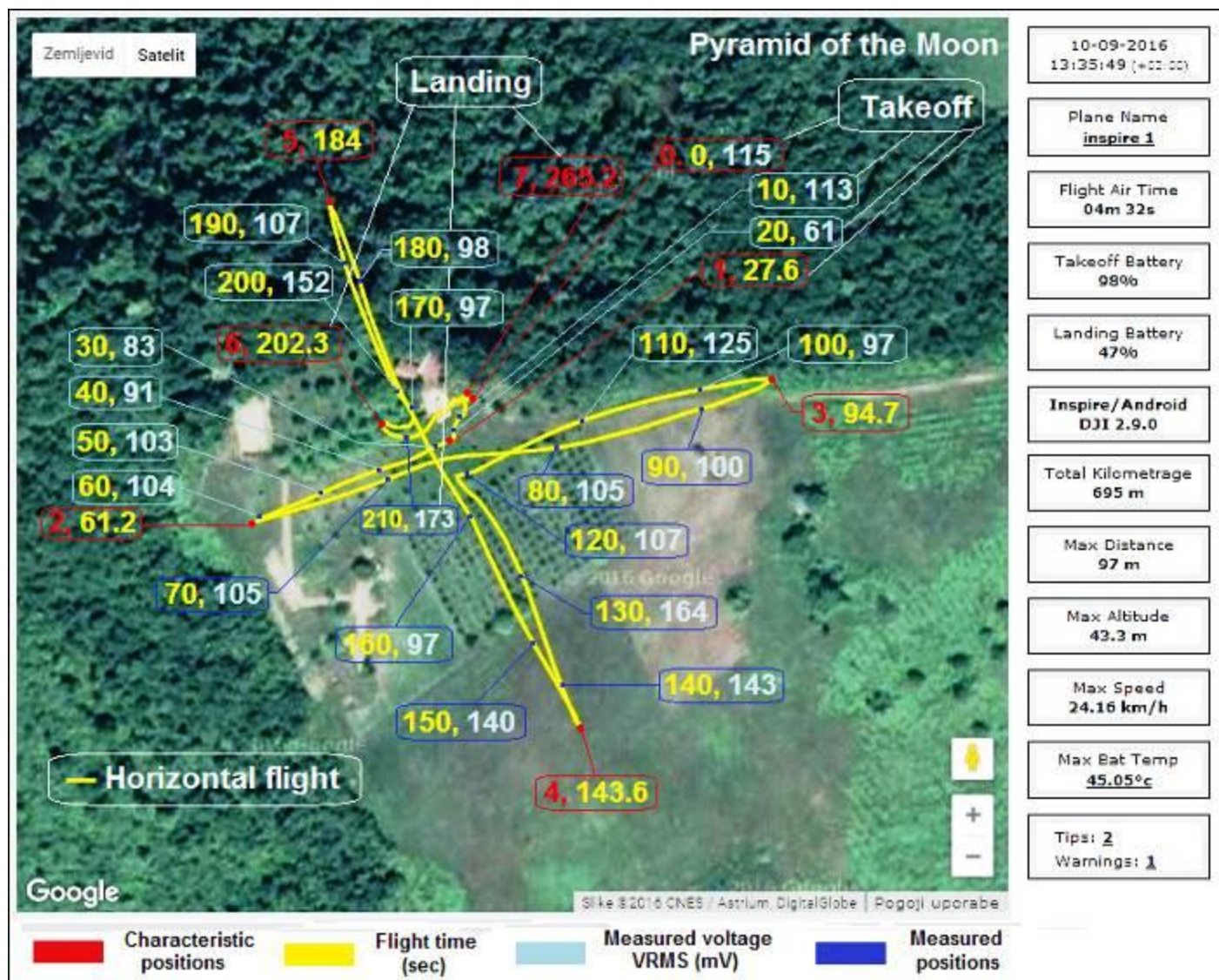


Fig.11, 3D structure of the energy field above the Pyramid of the Moon.

### Measurement Analysis of Ambient Fields at Location 3, "Bosnian Pyramid of the Moon":

- All measured values are within normal amounts for non-urban areas.

In Fig.9, which shows the signal recorded in „hole“ at the top of the „Bosnian Pyramid of the Moon“, can be observed frequency signals of 21.8, 23.7 kHz and a slightly less pronounced signal of 28.1 kHz which is consistent with previous measurements at this location [3]. Amplitude spectrum displayed in red on this picture shows a very unusual signal with a period of about 3 ms. Since there is no electricity network at this location or

any device other than the equipment used, such signal must be generated by an unknown source. Figure 10 shows the "E" fields values recorded during horizontal flight at an altitude of 43 meters in 140th second of flight. Vrms value at this point (see Fig.11, Fig. 12 and Appendix 3) is 143 mV, which is significantly above the value of the mean value during horizontal flight (~ 105 mV).

A very short (~ 150 micro sec) and intense signal (in the white circle) points to the specificity of this location. Nothing similar was registered in the other recordings during measurements at this location.

At this location, in contrast to the values registered at Location 2, and similar to Location 1, major changes in registered Vrms value can be seen during takeoff as well as landing and during horizontal flight also.

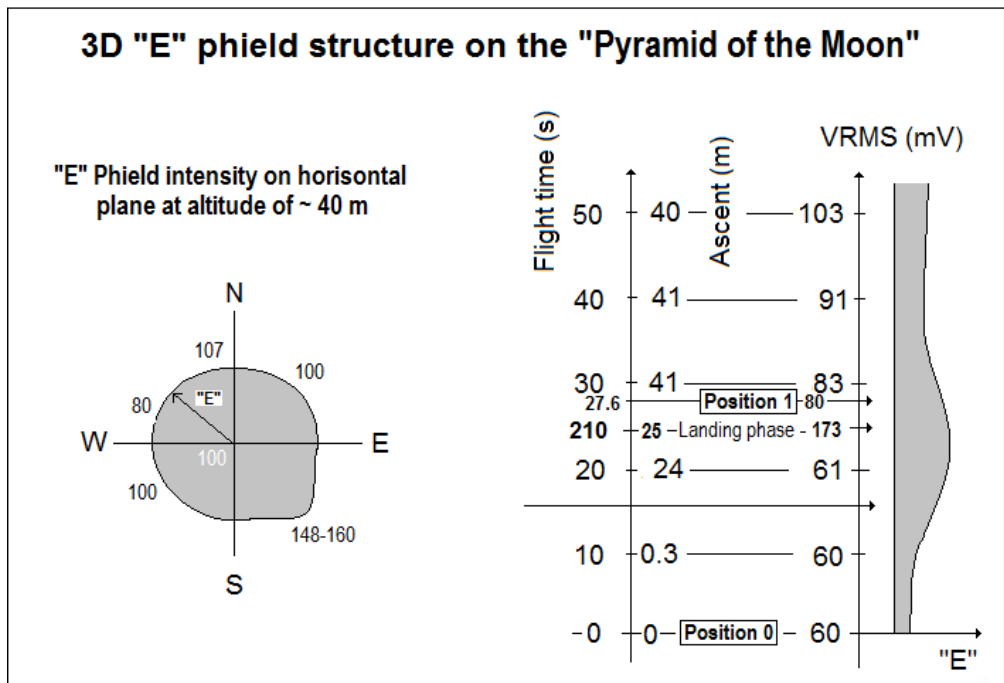
The increase in intensity of the "E" fields with height is characteristic for this Location. Also, a greater increase in the intensity of the "E" field during horizontal flight can be noticed in the south-east area of trajectory, which gives a structurally similar picture to that recorded at the Location 1.

A detailed overview of registered values during flight at this location is shown in Figure 11, in Appendix 3, and in the view given in Fig.12, which shows that the "E" field, at a height of 43 m, has an average value of about 100 mV and that it is much stronger in the area that corresponds to the flight time between about the 130th and 140th second (164 mV). Also, from the registered data it can be seen that the "E" field has significantly increased its value (173 mV) at a zone that corresponds to range between 210th and 220th seconds of flight, i.e. to the landing phase, when the height was about 25 meters above the measuring point.

Such "E" field structure is not correlative with the terrain configuration as it is at Location 2, but is a "non-standard" here and is comparable to the structure of the "E" field that was registered at Location 1 "Pyramid of the Sun".

Vrms values analysis shows increased amounts in the south-east zone of the horizontal flight part of the trajectory at a altitude of ~40 m, and above the measuring point at a height of 25 m - which indicates that the "energy field" is ellipsoidal and slightly inclined in the south-east direction.

More details about flight trajectory and registered values (GPS coordinates, altitude, speed, M.T. distance, time of flight, Vrms in specific positions, comments) for this location are given in Appendix 3.



SI.12 3D structure of "E" field on the Tumulus.



**Location 4:** "The Bell Tower / Concentric Stone Circles - Aura Amplifier", 11.09.2016, 10.15 h.

**Measured Values:**

$H_{50Hz} = 8 \text{ nT}$ ,  $H = 0.7 \text{ mG}$ ,  $E = 25 \text{ V/m}$ ,  $T = 24.2 \text{ }^\circ\text{C}$ ,  $\text{Hum} = 24 \%$ ,  $\text{Noi} = -20 \text{ dBrel}$ ,  $S_c = 10,1$ ;  $O_r = 100,3,3, 90$

**Characteristic Spectra:**

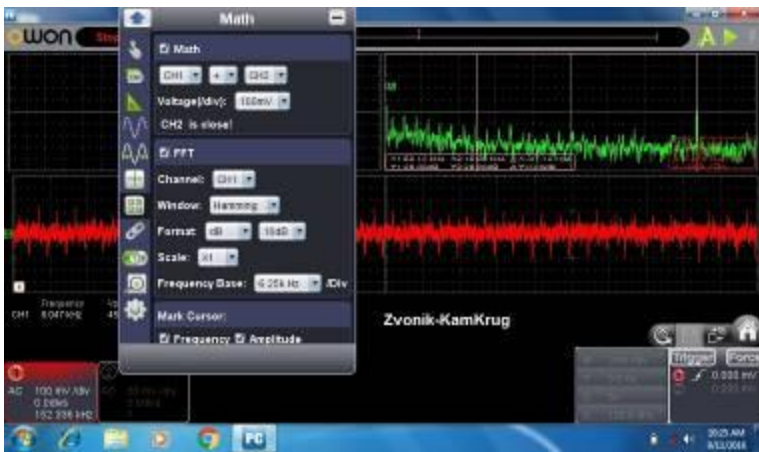


Fig.13, M.T. signal registered on the "Aura Amplifier".

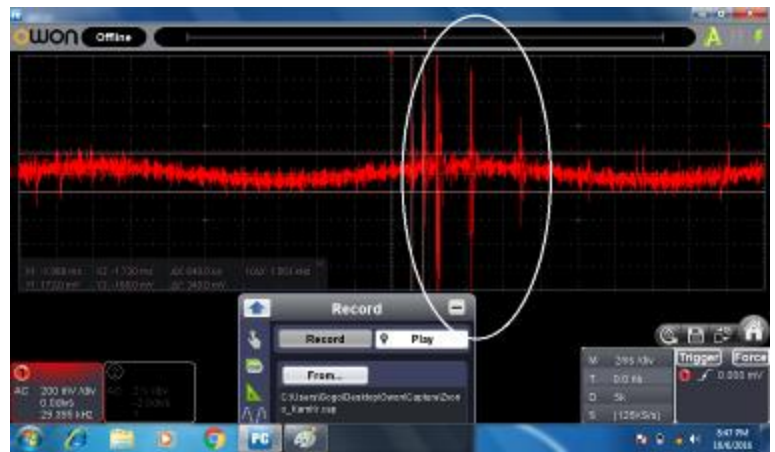


Fig.14, "E" signal registered at 25 m above the "Aura Amplifier".

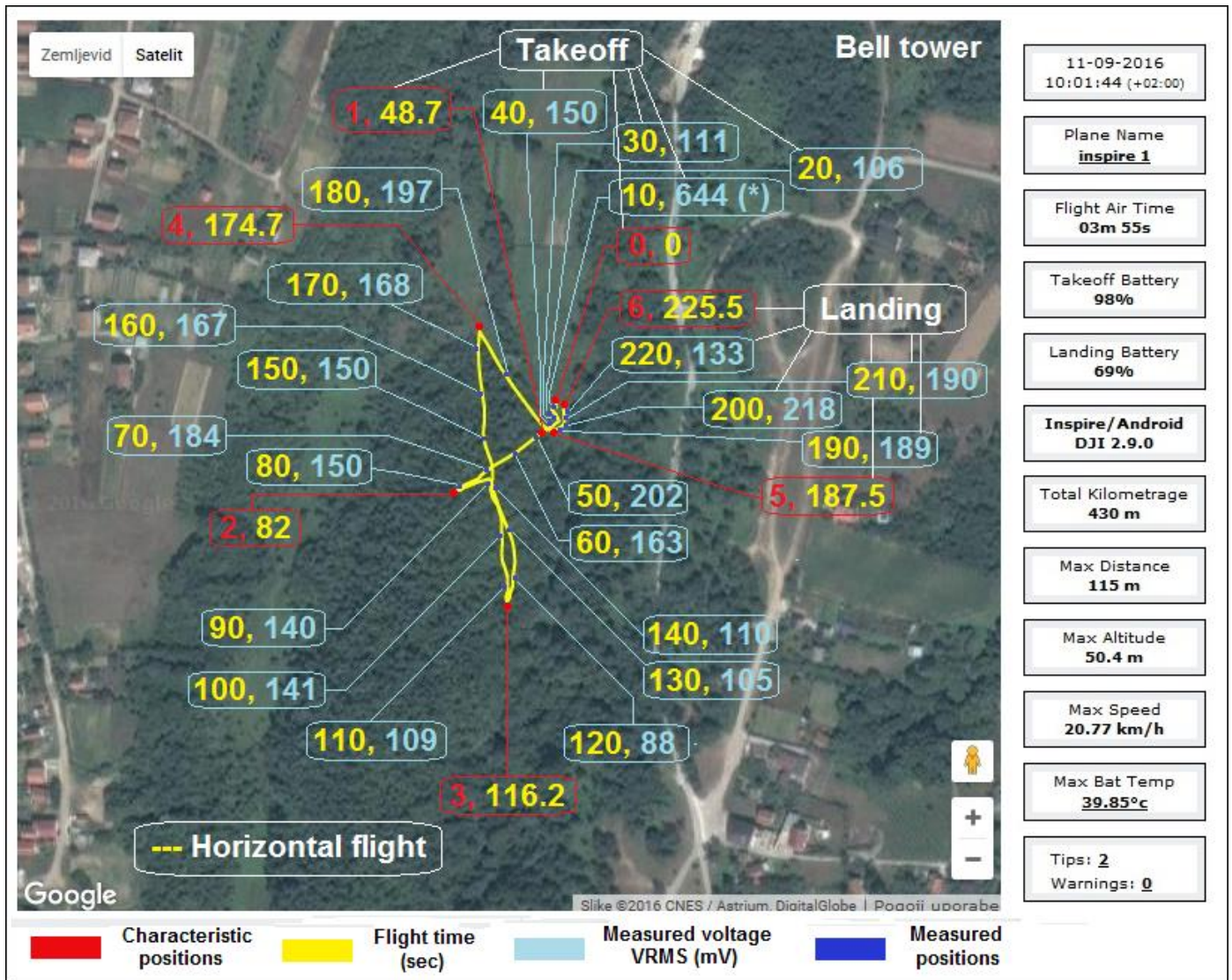


Fig.15. 3D structure of the energy field above the "Aura Amplifier" and "Bell Tower".

## Measurement Analysis of Ambient Fields at the Location 4, "Aura Amplifier- Bell Tower":

- Measured value of "EM smog" - caused by power network 50 Hz (Eq.1)  $H_{50\text{Hz}} = 8 \text{ nT}$  is slightly higher than the usual (4-6 nT) but is of negligible value. The source is probably one of the underground power lines.
- Experimental life energy measurement at this location (Eq.7, LM 3) show quite high orgon energy level ( $O_r = 90$ ) which is more than 50 % ( $=100/50$ ) higher than the average level.

In Figure 13, which shows the signal recorded on the ground, in the center of the Aura Amplifier, an object next to the Bell Tower, can be seen somewhat more pronounced frequency signals of 21.5, 27.5 kHz and of 29.3 kHz, which is consistent with previous measurements at the site of Bell Tower - the third opening performed on 06.17.2016. [3]. Figure 14 shows the "E" fields' signal recording during takeoff, at an altitude of about 25 meters above the measuring point (Positions 0 and 6) and 8 m above the top of the Bell Tower in 40th seconds of flight.

The recorded  $V_{\text{rms}}$  value at this position (see Fig.15, Fig. 16 or Appendix 4) is 150 mV, which is a value close to the values of "E" fields registered during horizontal flight in the area west of the line perpendicular to the top of the Bell Tower. In this recording, we can see a series of very short and intense impulses (the white circle) that are not registered in the other recordings during measurements at this location. Their source is unknown.

The spatial (3D) structure of the energy field at this location, shown in Fig. 16, is very similar to the one registered at the Location 1 and is shown in Fig. 4, but in Fig. 16 energy field structure is illustrated by changes in the spatial field distribution during take-off and during landing comparatively.

In any case, registered values point to very similar phenomena recorded at the Pyramid of the Sun.  $V_{\text{rms}}$  values registered during takeoff and landing, as well as during horizontal flight, at this location, vary significantly and point to a widely variable field strength along the vertical and horizontal plane at the height of 42-50 m above M. T. (Positions 0 and 6) as is shown on the flight trajectory chart, shown on Fig. 15, by the schematic structure of the energy field depicted in Fig. 16 and via data in Appendix 4.

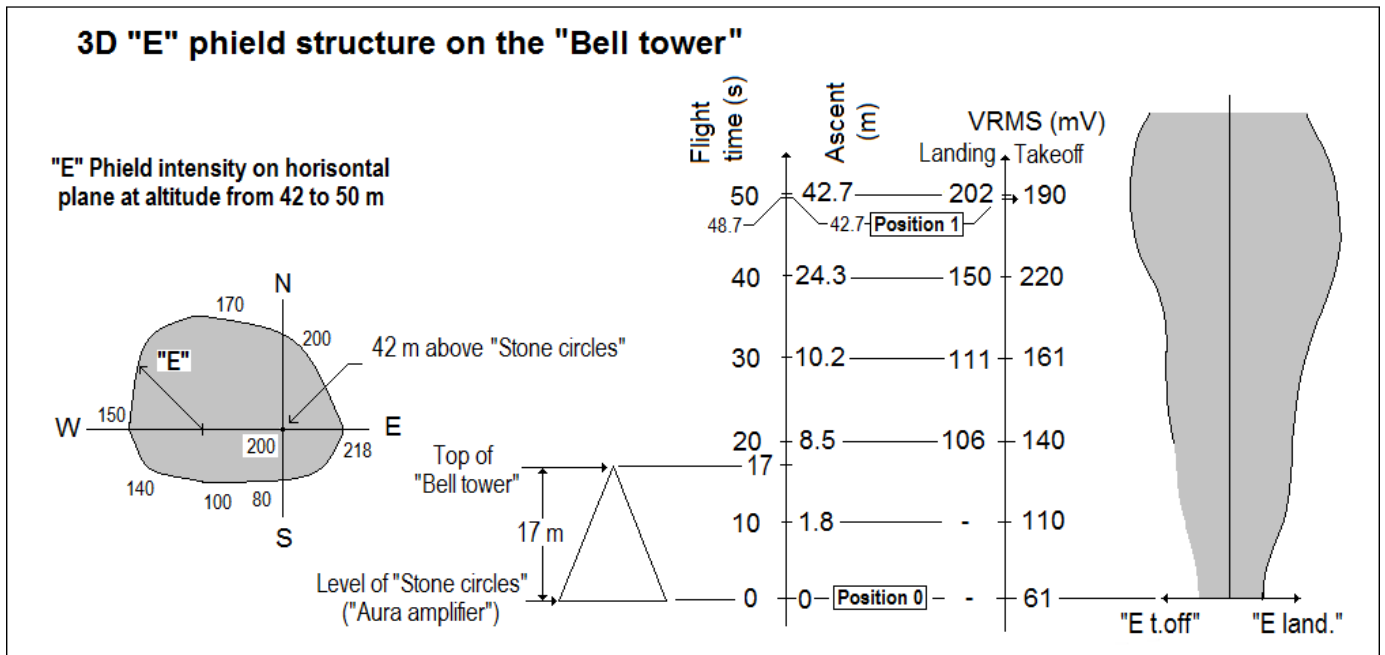
It is obvious that the energy field at this location has a minimum value in the measuring point on the ground (Positions 0 and 6), at the foot of Bell Tower and then grows with height and reaches a maximum value of 220 mV in the area above the top of the Bell Tower" a height of about 30 m above the MT (Positions 0 and 6), that is 13 m above the top of the Bell Tower, and then decreases (with height) to a value of about 190 mV at a height of 42 meters above M. T. (Positions 0 and 6) i.e. 25 m above the top of the Bell Tower.

$V_{\text{rms}}$  value registered during horizontal flight (Fig.15, Fig. 16) show that the field strength value have a maximum in the phases of flight between points 1-2 (70.s., 184 mV), Positions 4-5 and during landing, Positions 5-6. In Fig. 15 it is clear that these parts of the trajectory correspond to areas above the top, i.e. the highest points of Bell Tower, at a height of 42-50 m from the level of M.T. (Positions 0 and 6) or 25 to 33 m above the top of the Bell Tower". Also, in the same picture, it can be seen that  $V_{\text{rms}}$  values recorded at this height during horizontal flight decrease to the north (170 mV), to the west (150 mV) and especially to the south (100 mV).

Synthesising all registered values and analysis of "E" fields intensity distribution in the vertical and horizontal levels (Fig.15 and Fig.16), we can conclude that the energy field above the Bell Tower has the form of an elongated, irregular ellipsoid with the highest energy density in its center, at a height of about 13 m above the top of the Bell Tower slightly inclined to the east (close to point 5, Fig. 15) or in the direction of Aura Amplifier.

More details about flight trajectory and registered values (GPS coordinates, altitude, speed, M.T. distance, time of flight,  $V_{\text{rms}}$  in specific positions, comments) for this location are given in Appendix 4.

### 3D "E" field structure on the "Bell tower"



Sl.16 3D structure of "E" field on the "Bell Tower".

### Final considerations:

As in previous research missions and investigations conducted in areas managed by the "Archaeological Park: Bosnian Pyramid of the Sun" Foundation (AP BPS), there is a significant correlation between the measured values and objects' dimensions, structure, geometry and topological parameters at this site as well as a certain regularity within the objects which indicate this complex's wholeness as a functional unit. More details can be found in the section: "Topology AP BPS and Electromagnetism" [3].

**3D structure of energy fields above locations 1-Bosnian Pyramid of the Sun, 3-Bosnian Pyramid of the Moon and 4-Bell tower have a very similar configuration, analogous to the concept of a Scalar Field, the shape of an elongated ellipsoid with a maximum energy density at a height of 21.3, 25 and 13 m respectively.** "The energy ellipsoids" above Bell Tower (which is north of the Pyramid of the Sun) and the Pyramid of the Moon (which is south of the Pyramid of the Sun) are both slightly inclined in the direction of the Tumulus, and the energy ellipsoid above Bosnian Pyramid of the Sun is inclined in opposite direction of the Tumulus, as illustrated in Fig. 17.

**Bearing in mind real objects' topological arrangement (Fig.17) the existence of a certain regularity and symmetry of principles similar to rules set forth in the aforementioned section, "Topology AP BPS and Electromagnetism" [3] is obvious. The stated variations in intensity and orientation in the wave mechanics terminology correspond to the terms of affirmative interference process or amplitude and phase "harmonizing" of individual energy fields and "3D standing wave" constitution or complex scalar (torsion, axion, microleptonic ...) fields emerging as a qualitative complement to the idea of APBPS as analogous "3D-dipole Yagi" exposed in [3] ...**

Data about flight trajectory and registered values (GPS coordinates, altitude, speed, M.T. distance, time of flight, Vrms in specific positions, comments) relevant for this work are given in Annexes 1-4. Source data are contained in the original Excel spreadsheets with over 5000 entries for each location and number of additional parameters (batteries' state...) found in the database of drone navigators Marko Panček (Slovenia) and Stjepan Matijević (Croatia) [2].



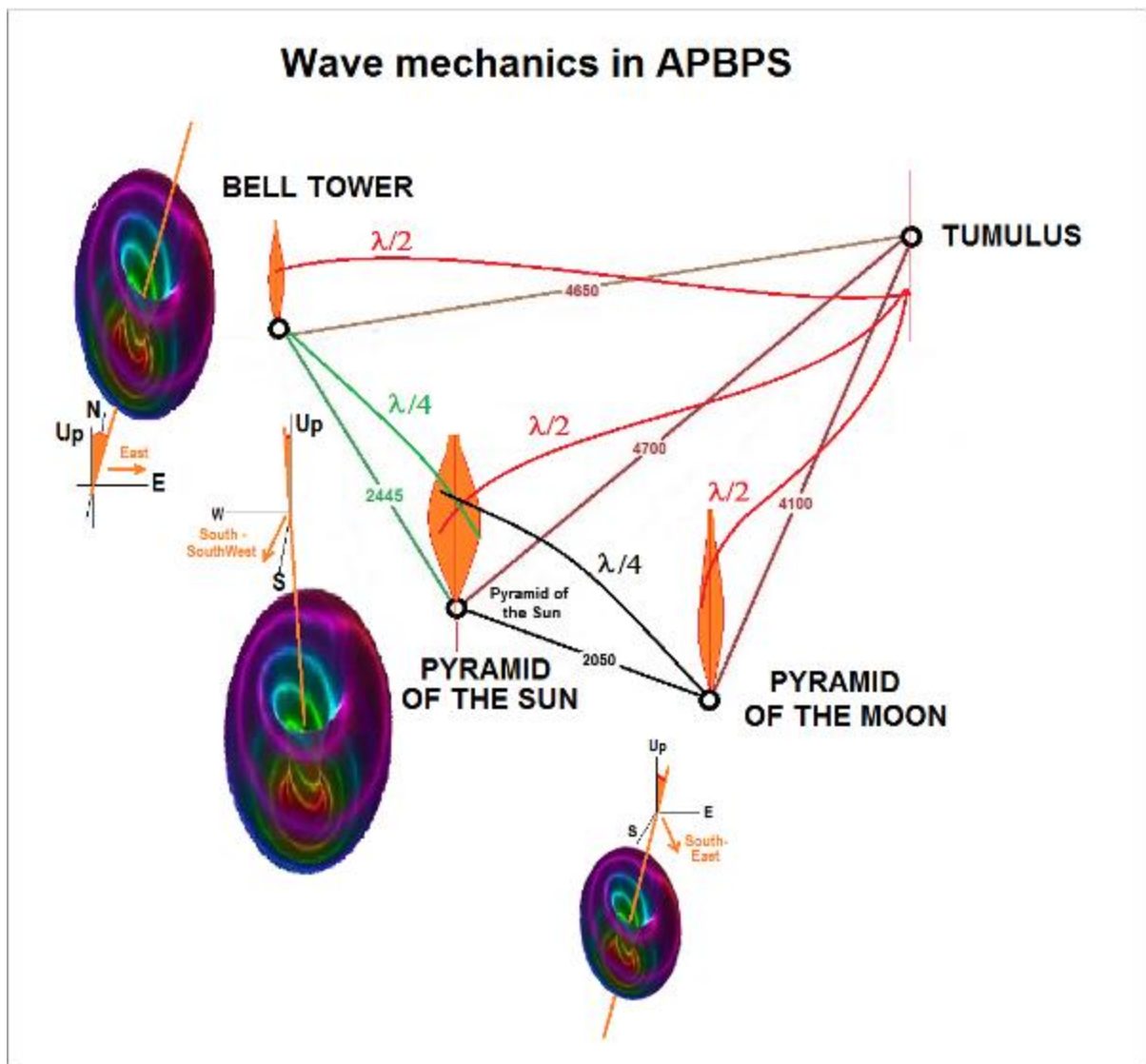


Fig.17. Wave mechanics in AP BPS

### Conclusion:

Based on our earlier theoretical work and practical studies as well as on measurements shown in previous work [3, 4] to the deep connection and numerical agreements among the physical parameters of the Bosnian Pyramid of the Sun (virtual and real height e.g.), and the 28 kHz energy beam parameters registered at this facility by several research teams, as well as with expected values according to the EDQ Model [6], and with measurements of Nikola Tesla [5].

Measurements carried out during our previous research mission [3] pointed to the deep connection of real physical, geometrical and topological parameters of AP BPS facilities with the measured EM radiation parameters, magnetotelluric signals, and subtle energy phenomena that were registered. The foregoing facts reduce the possibility of any stochastic character to the analyzed objects. The design and structure of phenomena measured in the AP BPS are not likely the result of solely natural geological, climatic, and similar processes but, on the contrary, the structure and arrangement of these objects are likely the result of the influence of ancient advanced technology.

Further, the real structure of the AP BPS, real objects' arrangement, their distance apart, and the controversial energy beam that Bosnian Pyramid of the Sun emits are not a result merely of the geometry and structure of these objects [5], but a holistic result: the result of the structure as a whole: the concrete objects' arrangement and distinct positions.

Measurement analysis of 3D energy fields' structure in this research mission indicates a quite unconventional distribution of energy density of the "E" fields above facilities in Locations 1-Bosnian Pyramid of the Sun, 3-Bosnian Pyramid of the Moon, and 4-Bell Tower, which exhibit "multi-layered"

ellipsoidal energy phenomena characteristic of torsion fields [8], which, by its mechanisms, form spherical energy structures, i.e., scalar waves or 3-dimensional "standing (or slowly moving) waves" that have very specific properties and characteristics of propagation. Generally, torsion fields are non-electromagnetic and non-gravitational phenomena that propagate at superluminal speeds (about a billion times faster than the speed of light), affecting gravity and bio-structures and possessing (NA Kozyrev, K.Volkamer, ...) elementary awareness.

More about what Pyramid is, Vortex of energy, Scalar field,..., are given in [9] and Appendix 5.

We emphasize that the measurements during this research were carried out exclusively with the equipment specified in the list of measurement equipment and spatial distribution of "E" fields recordings with the equipment listed under numbers 4, 5 and 6, using conventional measuring equipment intended for EM phenomena research. **Thus, the obtained results cannot be ignored. Considering the characteristics of torsion fields which constitute the phenomenon of "spatial" or "volumetric" fields, or "3D standing waves" that were registered during these investigations make AP BPS complex a candidate for further research.**

**In this, "the Laboratory of Nature", endowed with subtle energy phenomena, numerous controversial physical and physiological effects have been registered in recent years by a series of researchers of a wide range of specialty. Our research, based on scientific methodology and measurements made by conventional measuring devices, indicate the full mathematical and principled compliance with valid theories and with the latest insights of modern science [8], and also, of course, with Tesla technologies [7], that is, in compliance with the Principles of Nature which should be the impetus for new free-thinking explorations, theoretical and practical, that could lead to new discoveries and forward the progress of our civilization.**

Belgrade, 03.11.2016.

Goran Marjanovic, B.Sc.Eng.

Reference:

[1] GEOLOGICAL SURVEY..., Herbert A. Pierce and Donald B. Hoover, [pubs.usgs.gov/of/1988/0668/report.pdf](https://pubs.usgs.gov/of/1988/0668/report.pdf)

[2] The craft: INSPIRE1, drone navigator: Marko Panček (Slovenia), - drone navigation - aerial photo and video recording - photography 360 degrees in the air, the drone assistant navigator: Stjepan Matijevic (Croatia) - Photo 360 degrees from the ground. Project coordinator Sasa Nadjeji (Serbia) - photo and video recording system Polycontrast interference photography - videography. <https://roundme.com/tour/76789/view/201392/>

[3] ELECTROMAGNETISM AND TOPOGRAPHY OF THE BOSNIAN VALLEY OF THE PYRAMIDS, <http://piramidasunca.ba/eng/latest-news/item/11009-new-report-electromagnetism-and-topography-of-the-bosnian-valley-of-the-pyramids.html>

[4] Pyramids - guardians of primary cosmic vibration of the local densities, <http://piramidasunca.ba/eng/latest-news/item/7853-pyramids-guardians-of-primary-cosmic-vibration-of-the-local-densities.html>

[5] Analogy of Tesla's measurements, expected values by the KGE model and measurement results on Visočica, TESLA, SPACE-TIME AND BOSNIAN PYRAMID OF THE SUN, <https://www.scribd.com/document/203964613/Tesla-Space-Time>

[6] Energy Density Quantization model, <http://users.beotel.net/~gmarjanovic/index.html>

[7] Nikola Tesla - Prometheus of the New age, <http://piramidasunca.ba/eng/latest-news/item/10078-nikola-tesla-prometheus-of-the-new-age.html>

[8] A.E. Akimov, G.I. Shipov, "Torsion Fields and Their Experimental Manifestation," Proc. of the Internat. Scientific Conf. on New Ideas in Natural Science, St.-Petersburg, Russia, June 1996.

[9] Ken Rohla Talks Pyramid Power, <https://www.youtube.com/watch?v=NUkKBEOfpqw>

Appendix 1

Rbr.Baza	latitude	longitude	altitude(feet)	ascent(feet)	speed(mph)	distance(feet)	time(millisecond)	datetime(utc)	Vrms[mV]	Position	Comment
1	439.767.026.194.365	181.763.287.531.743	24.288.074.140.079	0	0	0	0	27.7.2016 17:25	150	0	Measuring Point
89	439.766.974.255.535	181.763.197.121.978	24.393.061.020.079	10.498.688	0.447388	303.737.214.444	10000	27.7.2016 17:26	158		Takeoff
177	439.766.899.053.804	181.762.694.166.618	24.862.221.140.079	574.147	0.447388	162.549.545.884	20000	27.7.2016 17:26	180		
264	439.766.905.681.507	181.762.299.514.098	25.606.971.820.079	131.889.768	0	263.107.619.968	30000	27.7.2016 17:26	162		
287	439.766.909.455.443	181.762.297.395.667	25.688.992.820.079	140.091.868	0	263.429.798.456	32700	27.7.2016 17:26		1	Above M.P.
348	439.768.350.808.831	181.761.799.129.197	25.682.431.140.079	1.394.357	68.002.976	62.151.248.708	40000	27.7.2016 17:26	150		Horizontal flight
438	439.770.338.140.536	181.760.531.548.447	25.685.711.980.079	139.763.784	5.816.044	14.084.482.078	50000	27.7.2016 17:26	158		
454	439.770.507.031.452	181.760.405.102.003	25.682.431.140.079	1.394.357	0.7158208	147.837.275.027	52100	27.7.2016 17:26	146	2	Max. Latitud.
525	439.768.987.152.559	181.760.818.226.002	25.695.554.500.079	140.748.036	74.266.408	96.550.528.024	60000	27.7.2016 17:26			
580	439.767.024.687.354	181.761.165.913.639	25.685.711.980.079	139.763.784	8.388.525	5.570.374.194	66400	27.7.2016 17:27	140		Above M.P.
611	439.765.743.522.634	181.761.546.179.113	25.682.431.140.079	1.394.357	85.227.414	65.424.542.776	70000	27.7.2016 17:27			
698	439.762.533.717.684	181.763.105.858.983	25.682.431.140.079	1.394.357	71.134.692	163.977.039.368	80000	27.7.2016 17:27	144		
730	439.762.089.413.464	181.763.467.725.916	25.682.431.140.079	1.394.357	0	180.180.123.876	83600	27.7.2016 17:27	156	3	Min. Latitud.
785	439.762.917.385.556	181.761.577.653.964	25.669.307.780.079	138.123.364	106.030.956	156.487.537.816	90000	27.7.2016 17:27			
873	439.764.247.080.803	181.756.679.526.605	25.669.307.780.079	138.123.364	87.016.966	200.952.762.336	100000	27.7.2016 17:27	160		
959	439.764.648.090.382	181.752.085.586.475	25.685.711.980.079	139.763.784	41.159.696	306.643.054.432		110000	27.7.2016 17:27	161	
987	439.764.565.110.799	181.751.778.535.923	25.666.026.940.079	13.779.528	0	315.232.621.636	113100	27.7.2016 17:27	158	4	Min. Longit.
1045	439.764.811.812.358	181.753.085.841.139	25.705.397.020.079	141.732.288	5.368.656	279.769.037.824	120000	27.7.2016 17:27			
1132	439.765.575.896.591	181.755.991.433.221	25.695.554.500.079	140.748.036	51.002.232	198.735.898.748		130000	27.7.2016 17:28	158	
1218	43.976.601.533.858	181.759.472.185.465	25.662.746.100.079	137.467.196	7.605.596	10.674.705.066	140000	27.7.2016 17:28			
1298	439.766.978.023.749	181.762.536.184.573	25.682.431.140.079	1.394.357	48.988.986	198.050.203.188	150000	27.7.2016 17:28			
1320	439.767.167.095.144	181.763.302.050.172	25.682.431.140.079	1.394.357	58.607.828	5.154.855.808	152500	27.7.2016 17:28			Above M.P.
1385	439.767.810.922.503	18.176.581.283.296	25.672.588.620.079	138.451.448	6.598.973	72.220.146.668	160000	27.7.2016 17:28			
1456	439.768.417.238.558	181.767.623.781.588	25.679.150.300.079	139.107.616	0.447388	124.649.610.288	168500	27.7.2016 17:28		5	Max. Longit.
1471	4.397.685.387.701	181.767.535.302.962	25.688.992.820.079	140.091.868	35.343.652	124.433.731.016	170000	27.7.2016 17:28			
1556	439.768.761.372.685	181.764.940.629.096	25.610.252.660.079	132.217.852	22.816.788	76.757.220.304	180000	27.7.2016 17:28			
1625	439.768.753.732.746	181.764.171.288.782	25.544.635.860.079	125.656.172	46.080.964	67.164.372.228	188000	27.7.2016 17:29		6	Above M.P.
1723	439.767.980.817.011	181.762.816.591.636	25.255.921.940.079	9.678.478	34.896.264	36.958.990.684	200000	27.7.2016 17:29			
1807	439.767.147.073.799	181.762.483.549.672	25.032.824.820.079	74.475.068	0.8052984	21.564.633.236	210000	27.7.2016 17:29			Landing
1812	439.767.136.984.917	181.762.473.692.108	25.016.420.620.079	72.834.648	0	217.466.542.392	210600	27.7.2016 17:29		7	Landed
1892	439.767.017.635.991	181.762.632.745.145	24.734.268.380.079	44.619.424	16.329.662	171.944.887.392	220000	27.7.2016 17:29			
1980	439.767.110.789.085	181.763.029.325.177	24.432.431.100.079	14.435.696	0.223694	7.448.819.136	230000	27.7.2016 17:29			
2067	439.767.100.945.629	181.763.237.405.828	24.281.512.460.079	-0.656168	0	30.282.317.242	240000	27.7.2016 17:29			
2087	439.767.087.868.562	181.763.232.800.476	24.261.827.420.079	-2.624.672	0	266.987.869.436	242300	27.7.2016 17:29			End

Appendix 2

Rbr.Baza	latitude	longitude	altitude(feet)	ascent(feet)	speed(mph)	distance(feet)	time(millis)	datetime(utc)	Vrms	Position	Comment
1	44.008.020.542.967	182.155.932.621.408	15.875.601.088.728	0	0	0	0	27.7.2016 21:21	148,00	0	Measuring Point
87	44.008.017.723.732	182.155.866.262.624	16.036.362.248.728	16.076.116	0.447388	20.224.574.138	10000	27.7.2016 21:21	143,00		Takeoff
176	440.080.149.831.325	182.155.850.071.235	16.610.509.248.728	73.490.816	0	296.772.975.376	20000	27.7.2016 21:21	144,00		
253	440.080.161.081.247	18.215.585.256.608	17.263.396.408.728	138.779.532	0.3131716	265.166.675.152	29000	27.7.2016 21:21		1	Above M.P.
261	440.080.152.987.537	182.155.825.805.768	17.260.115.568.728	138.451.448	0.223694	33.937.665.128	30000	27.7.2016 21:21	139,00		Horizontalni let
347	440.081.515.521.429	182.152.998.800.555	17.253.553.888.728	13.779.528	80.753.534	90.619.097.388	40000	27.7.2016 21:21	133,00		
431	440.082.729.704.351	182.150.485.998.294	17.276.519.768.728	140.091.868	16.105.968	170.030.189.168	50000	27.7.2016 21:22	123,00		
480	440.083.733.354.514	182.149.663.745.595	17.276.519.768.728	140.091.868	78.516.594	208.876.975.188	55700	27.7.2016 21:22		2	Min. Longit.
519	44.008.478.517.532	182.149.895.978.561	17.250.273.048.728	137.467.196	64.200.178	230.246.398.444	60000	27.7.2016 21:22	136,00		
606	440.086.702.197.014	182.152.227.115.269	17.263.396.408.728	138.779.532	72.924.244	256.203.748.356	70000	27.7.2016 21:22	118,00		
688	440.087.630.398.868	182.155.438.530.609	17.263.396.408.728	138.779.532	8.052.984	271.209.654.348	79300	27.7.2016 21:22		3	Max. Latitud.
694	440.087.623.950.134	182.155.750.136.075	17.263.396.408.728	138.779.532	782.929	270.706.701.576	80000	27.7.2016 21:22	128,00		
779	440.087.513.989.415	182.159.770.513.906	17.283.081.448.728	140.748.036	91.490.846	285.037.410.696	90000	27.7.2016 21:22	147,00		
867	440.086.214.210.232	182.164.096.848.341	17.256.834.728.728	138.123.364	8.276.678	30.653.052.162	100000	27.7.2016 21:22	178,00		
916	440.085.498.501.166	182.166.061.746.359	17.260.115.568.728	138.451.448	559.235	32.854.987.928	105700	27.7.2016 21:22		4	Max. Longit.
955	440.084.855.690.445	182.164.903.349.858	17.250.273.048.728	137.467.196	82.095.698	290.174.878.052	110000	27.7.2016 21:23	166,00		
1040	440.082.253.175.365	182.162.448.288.366	17.260.115.568.728	138.451.448	80.977.228	18.659.121.332	120000	27.7.2016 21:23	143,00		
1127	440.079.069.265.282	182.164.109.571.233	17.250.273.048.728	137.467.196	78.740.288	21.854.331.408	130000	27.7.2016 21:23	162,00		
1193	440.077.112.856.184	182.163.889.057.712	17.237.149.688.728	13.615.486	49.436.374	237.327.107.332	137500	27.7.2016 21:23		5	Min. Latitud.
1214	440.077.349.285.992	182.163.080.516.073	17.263.396.408.728	138.779.532	671.082	214.574.481.932	140000	27.7.2016 21:23	116,00		
1302	440.079.522.480.774	182.159.963.021.506	17.217.464.648.728	134.186.356	60.173.686	108.659.452.296	150000	27.7.2016 21:23	116,00		
1346	440.080.184.939.995	182.158.967.373.456	17.033.737.608.728	115.813.652	41.159.696	79.640.094.412	154900	27.7.2016 21:23		6	Above M.P.
1399	440.080.616.910.995	182.158.368.536.279	16.827.044.688.728	9.514.436	18.342.908	65.661.419.424	160000	27.7.2016 21:23	126,00		
1478	440.080.747.479.522	182.157.817.397.021	16.663.002.688.728	7.874.016	0.3131716	53.266.733.988	170000	27.7.2016 21:24	130,00		Landing
1574	440.080.828.393.753	182.157.214.620.229	16.367.727.088.728	492.126	0.9171454	40.600.066.916	180000	27.7.2016 21:24	127,00		
1653	440.080.540.091.425	182.156.861.851.495	16.128.225.768.728	25.262.468	0.447388	272.706.045.472	190000	27.7.2016 21:24	128,00		
1739	440.080.279.184.292	182.156.520.278.191	15.937.937.048.728	6.233.596	0.6263432	15.654.035.934	200000	27.7.2016 21:24	142,00	7	Landed
1825	440.080.376.074.585	182.156.433.582.737	15.859.196.888.728	-164.042	0	14.545.768.182	210000	27.7.2016 21:24	151,00		
1834	440.080.379.576.825	182.									



Appendix 3

Rbr.Baza	latitude	longitude	altitude(feet)	ascent(feet)	speed(mph)	distance(feet)	time(millisecond)	datetime(utc)	Vrms	Position	Comment
1	439.726.060.428.124	182.028.161.606.217	21.173.486.861.935	0	0	0	0	10.9.2016 11:35	115,00	0	Measuring Point
85	43.972.600.993.458	182.028.052.316.656	21.288.316.261.935	1.148.294	0.223694	3.410.105.096	10000	10.9.2016 11:35	113,00		Takeoff
163	439.725.774.267.098	182.027.908.795.804	22.000.258.541.935	82.677.168	17.000.744	123.721.460.652	20000	10.9.2016 11:36	61,00		
229	<b>439.725.228.377.768</b>	<b>182.027.830.034.757</b>	<b>22.548.158.821.935</b>	<b>137.467.196</b>	0	<b>315.810.705.644</b>	<b>27600</b>	10.9.2016 11:36		1	Above M.P.
250	43.972.521.332.027	182.027.736.149.029	22.544.877.981.935	137.139.112	18.119.214	32.863.518.112	30000	10.9.2016 11:36	83,00		Horizontal flight
338	439.724.622.825.979	182.025.932.954.108	22.544.877.981.935	137.139.112	2.908.022	78.583.992.016	40000	10.9.2016 11:36	91,00		
418	439.723.888.206.542	182.023.117.574.245	22.541.597.141.935	136.811.028	61.068.462	15.434.383.696	50000	10.9.2016 11:36	103,00		
501	43.972.303.015.007	182.020.408.614.747	22.548.158.821.935	137.467.196	0.6263432	231.657.159.644	60000	10.9.2016 11:36	104,00		
512	<b>439.723.034.991.162</b>	<b>182.020.441.918.184</b>	<b>22.548.158.821.935</b>	<b>137.467.196</b>	<b>20.579.848</b>	<b>230.804.797.412</b>	<b>61200</b>	<b>10.9.2016 11:36</b>		2	Min. Longit.
586	439.723.907.742.461	182.024.338.295.724	22.548.158.821.935	137.467.196	12.526.864	127.462.602.504	70000	10.9.2016 11:36	105,00		
665	439.724.877.206.334	182.030.461.642.179	22.541.597.141.935	136.811.028	130.413.602	74.235.238.596	80000	10.9.2016 11:37	105,00		
734	439.726.017.664.672	182.036.709.194.541	22.541.597.141.935	136.811.028	142.940.466	224.440.952.064	88000	10.9.2016 11:37			Above M.P.
751	439.726.383.285.477	182.038.093.655.632	22.541.597.141.935	136.811.028	113.860.246	261.053.486.044	90000	10.9.2016 11:37	100,00		
791	<b>439.726.721.056.742</b>	<b>182.038.667.144.924</b>	<b>22.541.597.141.935</b>	<b>136.811.028</b>	<b>2.908.022</b>	<b>276.896.662.404</b>	<b>94700</b>	10.9.2016 11:37		3	Max. Longit.
838	439.726.469.524.077	18.203.652.348.761	22.548.158.821.935	137.467.196	104.912.486	220.066.280.008	100000	10.9.2016 11:37	97,00		
874	439.726.083.143.216	182.034.109.526.591	22.541.597.141.935	136.811.028	104.241.404	15.617.782.652	104100	10.9.2016 11:37			Above M.P.
923	439.725.274.392.157	182.030.848.996.109	22.528.473.781.935	135.498.692	103.122.934	76.168.637.608	110000	10.9.2016 11:37	125,00		
1009	43.972.421.726.471	18.202.762.356.903	22.558.001.341.935	138.451.448	0	6.871.555.338	120000	10.9.2016 11:37	107,00		
1094	439.722.241.107.677	182.029.574.178.276	22.564.563.021.935	139.107.616	91.043.458	14.419.947.968	130000	10.9.2016 11:37	164,00		
1176	439.718.210.156.739	182.031.691.486.427	22.558.001.341.935	138.451.448	78.516.594	30.104.003.588	140000	10.9.2016 11:38	143,00		
1207	<b>439.717.777.937.401</b>	<b>182.031.992.082.673</b>	<b>22.535.035.461.935</b>	<b>13.615.486</b>	0	<b>318.484.590.244</b>	<b>143600</b>	10.9.2016 11:38		4	Min. Latitud.
1263	439.718.836.583.053	182.031.213.440.662	22.584.248.061.935	14.107.612	88.135.436	27.547.409.018	150000	10.9.2016 11:38	140,00		
1346	439.722.639.567.641	182.028.450.577.946	22.548.158.821.935	137.467.196	104.241.404	125.040.358.332	160000	10.9.2016 11:38	97,00		
1414	439.725.818.403.566	182.026.002.848.657	22.558.001.341.935	138.451.448	129.966.214	57.366.471.652	168000	10.9.2016 11:38			Above M.P.
1431	439.726.757.913.508	182.025.356.394.483	22.558.001.341.935	138.451.448	127.281.886	77.929.136.352	170000	10.9.2016 11:38	97,00		
1518	439.730.620.199.854	182.023.438.634.545	22.551.439.661.935	13.779.528	89.253.906	207.498.038.136	180000	10.9.2016 11:38	98,00		
1553	<b>439.731.197.683.021</b>	<b>182.023.059.938.964</b>	<b>22.525.192.941.935</b>	<b>135.170.608</b>	<b>0.447388</b>	<b>230.379.600.548</b>	<b>184000</b>	10.9.2016 11:38		5	Max. Latitud.
1607	439.730.002.185.453	182.023.461.770.219	22.561.282.181.935	138.779.532	86.345.884	189.502.630.736	190000	10.9.2016 11:38	107,00		
1687	439.726.607.820.699	1.820.253.089.482	22.272.568.261.935	10.990.814	78.963.982	7.751.968.752	200000	10.9.2016 11:39	152,00		
1704	<b>439.726.075.749.619</b>	<b>182.025.793.278.442</b>	<b>22.183.985.581.935</b>	<b>101.049.872</b>	<b>56.370.888</b>	<b>62.187.994.116</b>	<b>202300</b>	10.9.2016 11:39		6	Above M.P.
1771	439.725.559.947.638	182.025.109.878.908	22.026.505.261.935	8.530.184	111.847	82.184.057.748	210000	10.9.2016 11:39	173,00		
1858	439.725.362.090.163	182.026.371.005.311	21.869.024.941.935	69.553.808	4.026.492	5.347.605.158	220000	10.9.2016 11:39	103,00		
1941	439.725.955.829.603	182.027.259.800.109	21.511.413.381.935	33.792.652	23.711.564	239.844.495.864	230000	10.9.2016 11:39	92,00		Landing
2027	439.726.063.046.662	182.027.601.273.887	21.367.056.421.935	19.356.956	0.8052984	147.130.582.136	240000	10.9.2016 11:39	95,00		
2111	439.726.092.776.501	182.027.681.103.173	21.340.809.701.935	16.732.284	1.342.164	12.671.752.374	250000	10.9.2016 11:39	61,00		
2199	439.726.194.690.449	182.027.892.709.382	21.258.788.701.935	8.530.184	0.223694	85.933.729.784	260000	10.9.2016 11:40	50,00		
2240	<b>439.726.114.933.493</b>	<b>182.027.964.120.613</b>	<b>21.229.261.141.935</b>	<b>5.577.428</b>	0	<b>55.536.747.184</b>	<b>265200</b>	10.9.2016 11:40		7	Landed
2283	439.726.108.823.939	18.202.795.107.534	21.176.767.701.935	0.328084	0	58.030.841.752	270000	10.9.2016 11:40	61,00		
2344	439.726.143.935.869	182.027.966.073.734	21.163.644.341.935	-0.984252	0	59.701.117.396	277100	10.9.2016 11:40	59,00		End

Appendix 4

Rbr.Baza	latitude	longitude	altitude(feet)	ascent(feet)	speed(mph)	distance(feet)	time(millisecond)	datetime(utc)	Vrms	Position	Comment
1	439.947.368.228.344	181.587.718.034.666	15.492.646.519.387	0	0	0	0	11.9.2016 8:01	646 (me)	0	Measuring Point
88	439.947.201.247.295	181.587.406.591.205	15.554.982.479.387	6.233.596	11.408.394	101.950.790.664	10000	11.9.2016 8:01	644 (me)		Takeoff
170	439.946.902.247.344	181.587.692.116.173	15.778.079.599.387	28.543.308	34.225.182	170.148.955.576	20000	11.9.2016 8:02	106,00		
255	439.946.614.865.932	181.587.879.603.407	15.833.853.879.387	34.120.736	0	278.116.150.632	30000	11.9.2016 8:02	111,00		
341	439.946.415.677.602	181.587.532.026.149	16.303.013.999.387	81.036.748	16.105.968	3.509.514.548	40000	11.9.2016 8:02	150,00		
419	<b>439.946.217.445.446</b>	<b>181.587.066.015.453</b>	<b>16.913.250.239.387</b>	<b>142.060.372</b>	<b>0.9171454</b>	<b>45.340.224.548</b>	<b>48700</b>	11.9.2016 8:02		1	Above M.P./Max. Lon.
430	439.946.192.900.862	181.587.043.363.543	16.916.531.079.387	142.388.456	0.223694	4.639.435.844	50000	11.9.2016 8:02	202,00		Horizontal flight
512	439.944.820.370.099	181.584.428.890.585	16.900.126.879.387	140.748.036	64.423.872	126.863.849.204	60000	11.9.2016 8:02	163,00		
594	439.943.660.217.419	181.582.128.933.724	16.946.058.639.387	145.341.212	111.847	199.557.749.168	70000	11.9.2016 8:02	184,00		
678	439.943.142.622.672	181.580.748.622.254	17.123.223.999.387	163.057.748	12.750.558	239.231.963.036	80000	11.9.2016 8:03	150,00		
696	<b>439.943.036.237.627</b>	<b>181.580.665.546.928</b>	<b>17.106.819.799.387</b>	<b>161.417.328</b>	<b>1.342.164</b>	<b>2.434.055.196</b>	<b>82000</b>	11.9.2016 8:03		2	Min. Longit.
765	439.943.480.598.241	181.582.166.168.987	17.113.381.479.387	162.073.496	48.317.904	203.355.977.636	90000	11.9.2016 8:03	140,00		
853	439.942.590.808.621	181.583.375.487.277	17.129.785.679.387	163.713.916	100.438.606	208.263.130.024	100000	11.9.2016 8:03	141,00		
938	439.938.701.637.296	181.584.592.982.401	17.129.785.679.387	163.713.916	87.464.354	326.666.020.952	110000	11.9.2016 8:03	109,00		
992	<b>439.937.316.455.612</b>	<b>18.158.413.752.524</b>	<b>17.110.100.639.387</b>	<b>161.745.412</b>	<b>1.342.164</b>	<b>37.858.925.096</b>	<b>116200</b>	11.9.2016 8:03		3	Min. Latitud.
1023	439.937.590.977.841	181.584.118.213.725	17.123.223.999.387	163.057.748	50.107.456	36.902.232.152	120000	11.9.2016 8:03	88,00		
1101	439.939.763.489.356	181.583.774.044.649	17.129.785.679.387	163.713.916	447.388	296.141.085.592	130000	11.9.2016 8:03	105,00		
1188	439.942.364.458.049	181.583.412.988.113	17.113.381.479.387	162.073.496	57.936.746	214.702.762.776	140000	11.9.2016 8:04	110,00		
1273	439.944.540.922.028	181.583.008.435.579	17.139.628.199.387	164.698.168	60.173.686	161.001.317.488	150000	11.9.2016 8:04	150,00		
1359	<b>439.947.208.531.734</b>	<b>181.582.546.986.234</b>	<b>17.142.909.039.387</b>	<b>165.026.252</b>	<b>7.158.208</b>	<b>135.851.710.384</b>	<b>160000</b>	11.9.2016 8:04	167,00		Above M.P.
1364	439.947.386.096.176	181.582.535.478.231	17.142.909.039.387	165.026.252	71.805.774	13.603.018.808	160600	11.9.2016 8:04			
1446	439.950.595.316.021	181.5									

## "Ken Rohla Talks Pyramid Power!"

(start minute 00:59 -- 59 seconds in)

<https://www.youtube.com/watch?v=NUkKBEOfpqw>

Ken Rohla: "What a pyramid is, is an antenna that picks up high-frequency energy coming from the cosmos and brings it into, creates, a localized field. And it also creates a vortex of energy up through the tip. That type of energy is super-high-frequency. It's so high-frequency that it cannot be measured with conventional electromagnetic energy measuring devices. And so, therefore, a lot of conventional scientists will say it's nonsense . . .

"Well, it's not. It's a type of energy that some scientists like Dr. Konstantine Meyl in Germany are showing . . . they're showing that this energy is just super-high-frequency. It's inter-dimensional energy, meaning that it can travel through multiple dimensions or frequencies of space-time.

"So just suffice it to say that it's a subtle energy much like human consciousness. In fact, consciousness is a form of scalar energy, and it can travel through the dimensions of time and space.

"And so it's coming to us through the cosmos. It starts at the centers of galaxies, it probably starts at the centers of universes. Ultimately I think it's what we might call god consciousness. But it's zipping out of the centers of galaxies, emanating out from there, spiraling through the cosmos as it goes. It's traveling way beyond the speed of light.

"It passes through matter and conventional electromagnetic energy as if it's not even there, because it's actually what creates matter and electromagnetic energy. This faster-than-light scalar energy slows down and coagulates into this matter and energy that we see all around us.

"And so a pyramid can capture that energy and create a localized field with it of scalar waves and electromagnetic energy. Scientists have measured electrical current at the tops of pyramids and other kinds of conventionally measurable phenomena around pyramids. But then there's also a scalar field coming off of these things, a scalar energy field, and a vortex of scalar energy coming out of the tip of the pyramid. The Russians tend to call this energy toroidal energy or vortex energy or torsion waves, torsion energy. So whatever name it goes by, it's this faster-than-light subtle energy.

"So a pyramid captures this. It's coming down to us from the cosmos, and particularly from our sun, it's coming up from the center of the earth, because there's a singularity at the center of the earth. So this energy's coming up from the center of the earth. And the pyramid captures it like an antenna and it radiates out a localized field and a spiral vortex out of the tip."